

June 2010 Retirement Income Investments
1006 Retirement Income Investment v1.2.xls

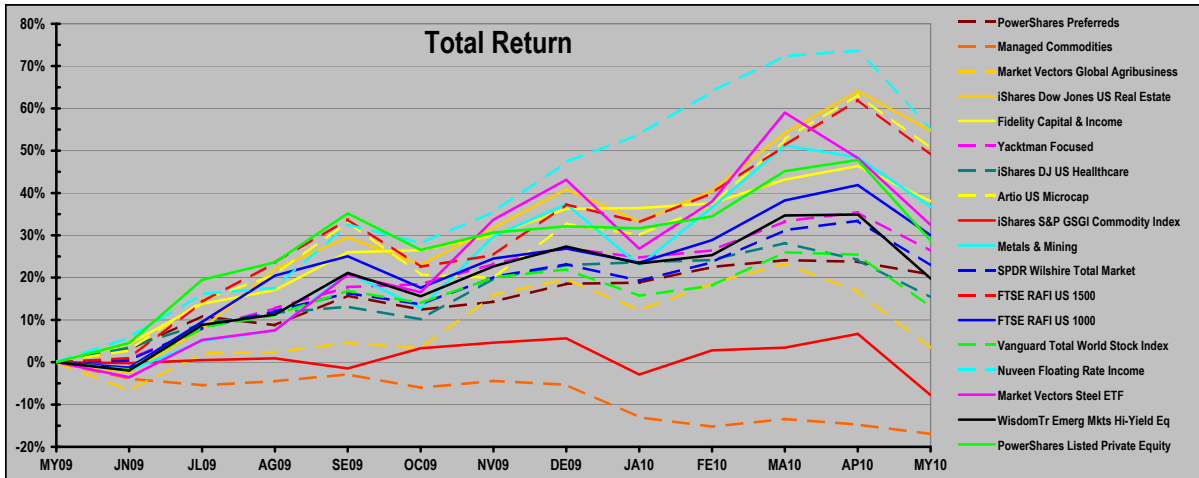
Risk Grade115	1 Month	3 Month	Returns to 5/31/10	YTD	1 Year	3 Year
Lowly Analyst	-8.8%	-1.8%	-2.7%	14.8%	10.0%	
Wilshire Total Market	-7.9%	-0.6%	-0.3%	22.9%	-22.6%	
Vanguard Total World Stock Index	-9.9%	-4.3%	-7.3%	13.0%	NA	

Recommendations: Yacktman Focused 5%, RAFI US 1000 4%, RAFI US 1500 5%, PowerShares Listed Private Equity 8%, PowerShares Preferreds 6%, Market Vectors Steel 5%, Metals & Minerals 3%, Managed Commodities 11%, Wisdom Tree Emerging Market 10%, DJ US Realty 10%, Nuveen Floating Rate Income 11%, Fidelity Capital and Income 11%, Artio US Microcap 11%

www.curtfey.com

Fey Asset Management LTD

401(k) Funds	NAV 5/31/10	1 Mo	3 Mo	1 Year	Price/Earnings Ratio	Monthly Standard Deviation	RiskGrade (Total World Stock142)	Sup-Prime 10/11/07-3/6/09	Sep 11 9/10/01 9/21/01	3 Years per Year	5 years per Year
PHX Panhandle Oil and Gas	\$25.14	1%	-7%	23%	35.9	13%	167	NA	NA	NA	NA
TIP iShares Barclays TIPS	\$105.56	0%	3%	7%	NA	2%	26	-7%	NA	5%	3%
SLV iShares Silver Trust	\$18.03	-1%	12%	17%	NA	10%	142	-3%	NA	11%	NA
ASFIX Absolute Strategies	\$10.58	-1%	0%	11%	NA	2%	12	-20%	NA	2%	NA
PCY Emerging Mkts Sovereign Debt	\$25.66	-2%	2%	17%	NA	3%	54	NA	NA	NA	NA
REZ iShares FTSE NAREIT Residential	\$35.30	-2%	15%	61%	45.0	6%	169	NA	NA	NA	NA
PGX PowerShares Preferreds	\$13.41	-2%	-1%	21%	NA	6%	88	NA	NA	NA	NA
LSC Managed Commodities	\$8.11	-3%	-2%	-17%	NA	4%	70	NA	NA	NA	NA
BWX SPDR Barclays Intl Treasury Bond	\$53.14	-4%	-5%	-2%	NA	3%	48	-3%	NA	NA	NA
ICF Cohen & Steers US Realty Index	\$58.43	-5%	13%	60%	NA	10%	178	-74%	-6%	-14%	1%
JNK SPDR Barclays High Yield Bond	\$37.59	-5%	0%	21%	NA	4%	92	NA	NA	NA	NA
DBA PowerShares DB Agriculture	\$23.58	-5%	-7%	-15%	NA	5%	68	-17%	NA	-1%	NA
VNQ Vanguard REIT Index	\$49.51	-5%	12%	57%	NA	9%	184	-70%	NA	-10%	4%
IYR iShares Dow Jones US Real Estate	\$49.95	-6%	10%	55%	NA	9%	178	-71%	-8%	-13%	0%
FAGIX Fidelity Capital & Income	\$8.60	-6%	0%	38%	NA	4%	48	-36%	-6%	5%	8%
WIP SPDR Intl Govt Infr-Protected Bond	\$51.65	-6%	-4%	1%	NA	4%	62	NA	NA	NA	NA
PBP Powershares S&P 500 BuyWrite	\$20.15	-6%	-6%	12%	15.0	4%	92	NA	NA	NA	NA
YAFFX Yacktman Focused	\$16.04	-7%	0%	26%	NA	7%	88	-43%	-10%	7%	8%
SDY SPDR S&P Dividend	\$46.92	-7%	0%	26%	14.0	5%	106	NA	NA	-5%	NA
IYH iShares DJ US Healthcare	\$59.64	-7%	-7%	15%	NA	4%	91	-37%	-8%	-5%	1%
IWM iShares Russell 2000 Index	\$66.25	-8%	6%	34%	NA	6%	160	-57%	-14%	-5%	2%
EMG SPDR Mid Cap Growth	\$61.13	-8%	3%	35%	20.0	6%	140	NA	NA	0%	NA
DSG Wilshire Small Cap Growth	\$88.97	-8%	5%	36%	21.0	7%	155	-59%	-16%	-1%	4%
JMCAX Artio US Microcap	\$9.61	-8%	10%	51%	3.0	8%	154	-65%	NA	-4%	NA
IYW iShares Russell 3000 Index	\$64.89	-8%	0%	23%	NA	5%	125	-55%	-12%	-8%	1%
XME Metals & Mining	\$51.39	-8%	0%	37%	20.0	10%	226	-66%	NA	-5%	NA
DSV Wilshire Small Cap Value	\$61.22	-8%	5%	41%	17.0	7%	158	-59%	-13%	-3%	4%
TMW SPDR Wilshire Total Market	\$81.74	-8%	-1%	23%	15.0	5%	117	-54%	-10%	-7%	1%
PRFZ FTSE RAFI US 1500	\$54.93	-8%	6%	49%	18.0	9%	167	-60%	NA	0%	NA
ELG SPDR Wilshire Large Cap Growth	\$48.11	-8%	-2%	23%	18.0	5%	121	-51%	-13%	-3%	2%
PRF FTSE RAFI US 1000	\$48.60	-8%	1%	30%	14.0	7%	129	-60%	NA	-6%	NA
IWC iShares Russell Microcap Index	\$42.71	-9%	8%	35%	17.0	7%	168	-63%	NA	-10%	NA
PID PowerShares Intl Dividend Achievers	\$13.02	-9%	-5%	15%	13.0	7%	136	-55%	-12%	-45%	-27%
PXH FTSE RAFI Emerging Markets	\$20.70	-9%	-3%	16%	13.0	9%	112	NA	NA	NA	NA
EEM iShares Emerging Markets Index	\$38.10	-9%	-2%	17%	13.0	9%	184	-58%	NA	0%	13%
IEO US Oil & Gas Exprtn & Production	\$51.35	-9%	-4%	12%	16.0	8%	192	-30%	NA	0%	NA
CUT Claymore/Clear Global Timber Index	\$17.65	-10%	3%	20%	19.0	11%	177	-69%	NA	NA	NA
VT Vanguard Total World Stock Index	\$39.94	-10%	-4%	13%	14.0	6%	145	NA	NA	NA	NA
EEB BRIC (Brazil, Russia, India, China)	\$38.11	-10%	-4%	17%	13.0	9%	178	-58%	NA	7%	NA
IGE North Amer Natural Resources	\$32.60	-10%	-2%	8%	15.0	7%	166	-52%	NA	-1%	7%
DBC PowerShares DB Commodity Index	\$21.96	-10%	-7%	-5%	NA	6%	106	-17%	NA	-4%	NA
JFR Nuveen Floating Rate Income	\$10.68	-10%	-5%	55%	2.0	6%	123	-53%	NA	-1%	2%
ILF S&P Latin America 40 Index	\$42.81	-11%	-5%	21%	NA	9%	178	-53%	NA	11%	22%
SLX Market Vectors Steel ETF	\$56.93	-11%	-4%	32%	15.0	12%	249	-70%	NA	1%	NA
MXI S&P Global Value	\$55.12	-11%	-5%	13%	15.0	9%	121	NA	NA	-3%	NA
VEU Vanguard FTSE All-World ex-US	\$38.90	-11%	-7%	8%	14.0	7%	168	-59%	NA	-9%	NA
EFA iShares MSCI EFAE Index	\$48.32	-11%	-8%	5%	NA	7%	166	-40%	-12%	-12%	0%
DEM WisdomTr Emerg Mkts Hi-Yield Eq	\$46.61	-11%	-4%	20%	12.0	8%	175	-46%	NA	NA	NA
MOO Market Vectors Global Agribusiness	\$37.80	-11%	-13%	3%	16.0	8%	155	-47%	NA	NA	NA
EWZ iShare MSCI Brazil Index	\$63.52	-12%	-7%	20%	NA	10%	200	-54%	-17%	16%	23%
PSP PowerShares Listed Private Equity	\$8.78	-13%	-4%	29%	11.0	9%	174	-85%	NA	-29%	NA
GSG iShares S&P GSGI Commodity Index	\$27.77	-14%	-10%	-8%	NA	8%	93	-49%	NA	-13%	NA



Prepared by Curt F. Fey, PhD, CFA, CFP, Registered Investment Advisor, Member of NAPFA.
CurtFey@CurtFey.com. (585) 244-0152

Copyright 2010 Fey Asset Management LTD. All rights reserved.